



CAPABILITY STATEMENT



ABOUT US.

Marine Structures is Australia's market leader in marine infrastructure and berthing systems for commercial and residential use. Committed to innovation and excellence, we provide a comprehensive design and construction service, specializing in engineering, manufacture, and installation of quality marine structures.

The powerhouse entity was formed through the merger of The Jetty Specialist and Superior Jetties. Both proudly Australian owned companies with over 70 years combined experience, with a rich history of innovation, sustainable product development and investment in advanced equipment.

With a shared factory footprint in excess of 36,000 sqm across Queensland, our state-of-the-art marine manufacturing facilities are unparalleled nationwide, enabling world-class precise engineering and fabrication.

We employ over 150 staff dedicated to delivering the highest standards of workmanship. Our team is passionate about what we do, and this is evident in the quality of our work and the lasting relationships that have driven our company's growth.

We are customer centric with a client list including local and state government departments and many of Australia's best marinas. We inspire confidence by producing products of enduring quality that require minimal maintenance and deliver long-term value.



OUR MISSION AND VALUES.

Our mission is to be the trusted leader in the design and construction of marine structures, empowering people to explore and enjoy our waterways.



Values

-  Innovation
-  Leadership
-  Trust
-  Authenticity

CAPABILITIES AND CAPACITY.



With over \$700 million dollars worth of marine structures delivered, our skills and capabilities include:

- Marina Design and Construction
- Marinas
- Ferry Terminals
- Public Boating Infrastructure
- Boat Ramp Pontoons
- Marine Piling
- Wave Attenuators
- Travelifts / Straddle Carrier Infrastructure
- Gangways / Access Walkways
- Pedestrian Bridges
- Residential Pontoons / Jetties / Decks
- Pump Pontoons / Pipe Floats

CAPABILITIES AND CAPACITY.

With a team of over 150 employees across design, fabrication, installation and barge teams, we have the ability to scale up to meet increased demand for additional commercial or ongoing projects. In addition, we work with a number of specialised sub-contractors and partners locally, nationally and internationally.



OUR MANUFACTURING FACILITIES & EQUIPMENT.

Marine Structures operates two manufacturing facilities in Queensland. This includes a 24,000 sqm operating facility on the Sunshine Coast with 6,000 sqm of internal factory space, supported by four overhead gantry cranes and over 12,000 sqm of external hardstand. On the Gold Coast, we operate 10,000 sqm lean manufacturing facility.



Both facilities offer a large, adaptable area for:

- Concrete pontoon manufacturing
- Aluminium pontoon manufacturing
- Precast concrete
- Aluminium fabrication
- Steel fabrication
- Special "one-off" fabrications
- CNC routing
- Machining
- Mechanical and maintenance support for our plant and equipment



OUR MANUFACTURING FACILITIES & EQUIPMENT.

Our Gold Coast facility is also home to 'Superior Rotomoulding', a leading manufacturer of rotomoulded products for a number of industries including marine, mining, automotive and defence.

Both facilities have the ability to produce year-round in all weather conditions, guaranteeing a consistently high-quality product output.

A fleet exceeding 30 vessels, including piling barges, cranes, trucks and workboats, is capable of piling and installation work for residential projects, marinas, public sector ferry terminals and government infrastructure projects.



OUR PEOPLE.

Marine Structures is led by people who are passionate about innovation, collaboration, and continuous improvement. Our engineers, draftspersons, project managers, concreters, boilermakers, install and barge teams are a talented team committed to creating great marine structures.

Our people love what they do.



When you partner with Marine Structures, a dedicated project manager will guide you through the project, ensuring exceptional service, quality, and safety in alignment with project scope. We support you from design to engineering to approvals, manufacturing, and installation.



THE DIRECTORS.

John Hogan

John has an extensive professional background which includes many years in concrete, engineering, mining, project and general management roles in both Australia and the United States. A boilermaker by trade, John holds an AD in Mechanical Engineering, a Bachelor of Business (Management) Degree and is a Certified Marina Professional (Global Marina Institute) with a GAICD. His varied background and overseas consulting and career experience enable him to bring a multi-industry and international perspective.

Dane Morris

Client focused with exceptionally strong technical knowledge, Dane has several years' experience in professional roles within the design and construction industry in Australia and South East Asia. An IPMA Certified Project Manager with a Bachelor of Engineering (Civil) and visionary leadership skills, Dane has significant expertise with projects that deliver return on investment. He has the unique ability to understand clients' needs and facilitate start-to-finish outcomes that are efficient and objective based.

Jacob Morris

Jacob has over 15 years' experience in the Marine Industry including manufacturing, concreting, piling, logistics and operations. With a Bachelor of Applied Multimedia, Jacob is a customer orientated leader in design and construction. Also a highly capable estimator, Jacob can confidently interpret, review and prepare for complex and technical projects while taking a realistic and cost-effective approach.



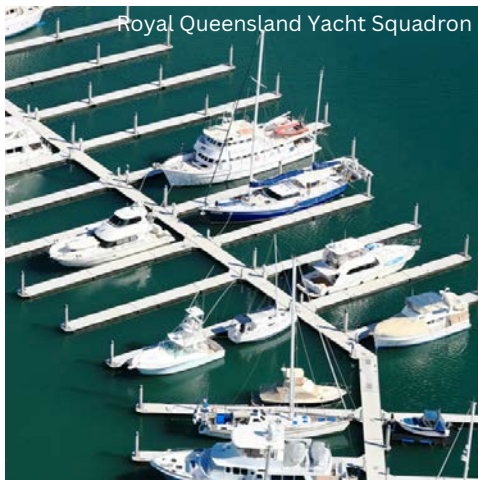


OUR PROJECT PORTFOLIO.

\$700M+ OF MARINE
INFRASTRUCTURE BUILT
TO DATE

\$21.6M **ROYAL QLD
YACHT SQUADRON
MARINA**
108 new berths, marina
arm extensions &
modifications.

\$41M **STH MORETON BAY ISLAND FERRY
TERMINALS DEPT TRANSPORT & MAIN
ROADS & REDLAND CITY COUNCIL**
New all access ferry terminals at
Russell, Macleay, Lamb &
Karragarra Islands.



Royal Queensland Yacht Squadron



Southern Moreton Bay Island



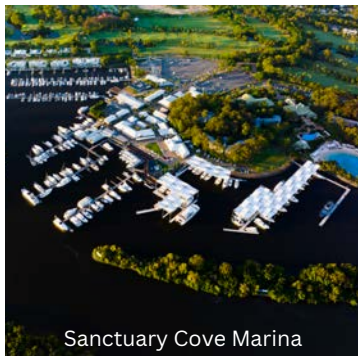
Southport Yacht Club

\$20M **PUBLIC BOATING
INFRASTRUCTURE FOR
BRISBANE CITY COUNCIL**
River access pontoons, gangways
& walkways.

\$20M **SANCTUARY COVE MARINA
RECONFIG & EXPANSIONS**
Completed and ongoing
development.

\$12M **MANTARAY MARINA &
RESIDENCES (IN PROGRESS)**
Superyacht marina &
floating bar & restaurant.

\$10M **CLUMP POINT BOATING
INFRASTRUCTURE**
Boating infrastructure upgrade
including commercial jetty and
pontoons.



Sanctuary Cove Marina



Hayman Island Marina



New Farm Park



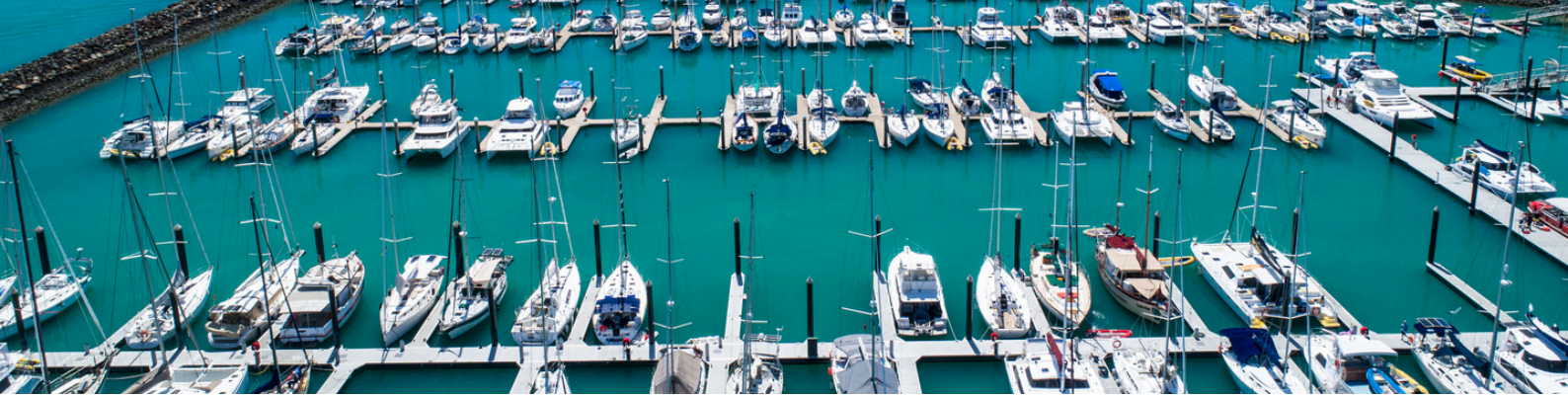
Pelican Waters Marina

\$3.2M **WEIPA WAVE ATTENUATOR**
Providing calmer waters for safer
boat launching and retrieval.

\$9.5M **SOUTHPORT YACHT CLUB
SUPER YACHT BERTH**
Australia's largest Superyacht
Berth - 163 metres long.

\$1.2M **HAYMAN ISLAND (MULPHA
AUSTRALIA)**
Marina Redevelopment - Ferry
terminal pontoon system.

\$3.9M **PELICAN WATERS MARINA**
Marina facility including 126 wet
berths.



\$13.3M

MACKAY MARINA

Design & construction of over 400 berth marina, 2 mega berths, superyacht pontoon, fuel dock, 150t travelift, 37 trawler berths.

\$10M

THE BOATWORKS

Completed and ongoing development.

\$2.9M

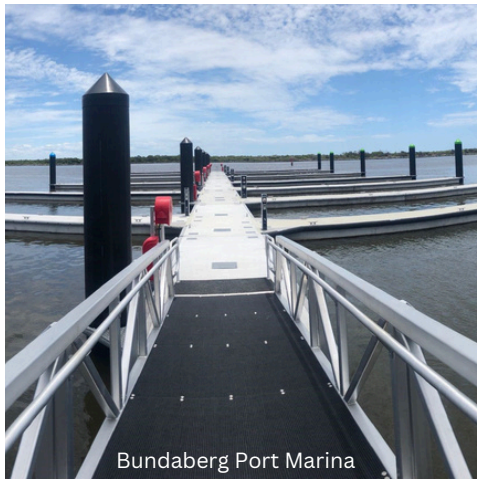
EUDLO CREEK PEDESTRIAN & CYCLEWAY BRIDGE

316m long x 3m clearway aluminium & concrete hybrid bridge.

\$3.5M

BIRKENHEAD POINT MARINA

200 berths, easy access office, multi task area for public use.



Bundaberg Port Marina



Cockle Bay



One Mile Ferry

\$9.4M

MOOLOOLABA MARINA DEMOLITION AND REBUILD

Design and construct new 265 berth marina.

\$3.1M

ONE MILE PUBLIC FERRY PONTOON - STRADBROKE IS

25.2m x 9.2m pontoons for wave climate up to 2.2m, disabled access gangways.

\$2M

COCKLE BAY REDEVELOPMENT

115 x six sided concrete pontoons, 3 x all access 5kPa gangways

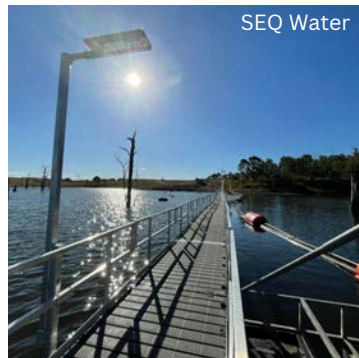
\$6M

KINGSFORD SMITH DRIVE UPGRADE PONTOONS

Aluminium pontoons for public and commercial operator access.



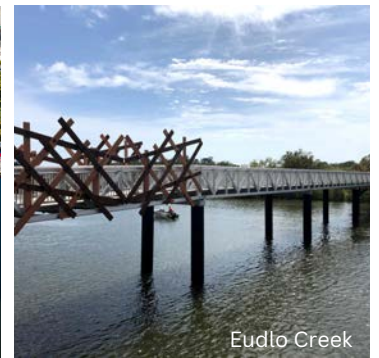
Kingsford Smith Drive



SEQ Water



The Boatworks



Eudlo Creek

\$5.4M

CORAL SEA MARINA

Restoration of over 120 cyclone damaged berths.

\$0.5M

SEQ WATER

150m floating walkway + handrails, security gate, anchoring system.

\$2.9M

EUDLO CREEK PEDESTRIAN & CYCLEWAY BRIDGE

316m long x 3m clearway aluminium & concrete hybrid bridge.

\$3M

VUNABAKA BAY RESORT (FIJI)

5 Bespoke marinas and multiple residential pontoons.

OUR PROJECT DEVELOPEMENT PROCESS.

We offer a one-stop service from concept to construction:

1

Client consultation to define needs and expectations



2

Development of concept plans for client approval



3

Engineering consultation and certification of the designs



4

Project management and detailed planning including submission of necessary statutory applications for approvals.



5

Construction phase. Project delivery (proactive monitoring and construction management to practical completion.

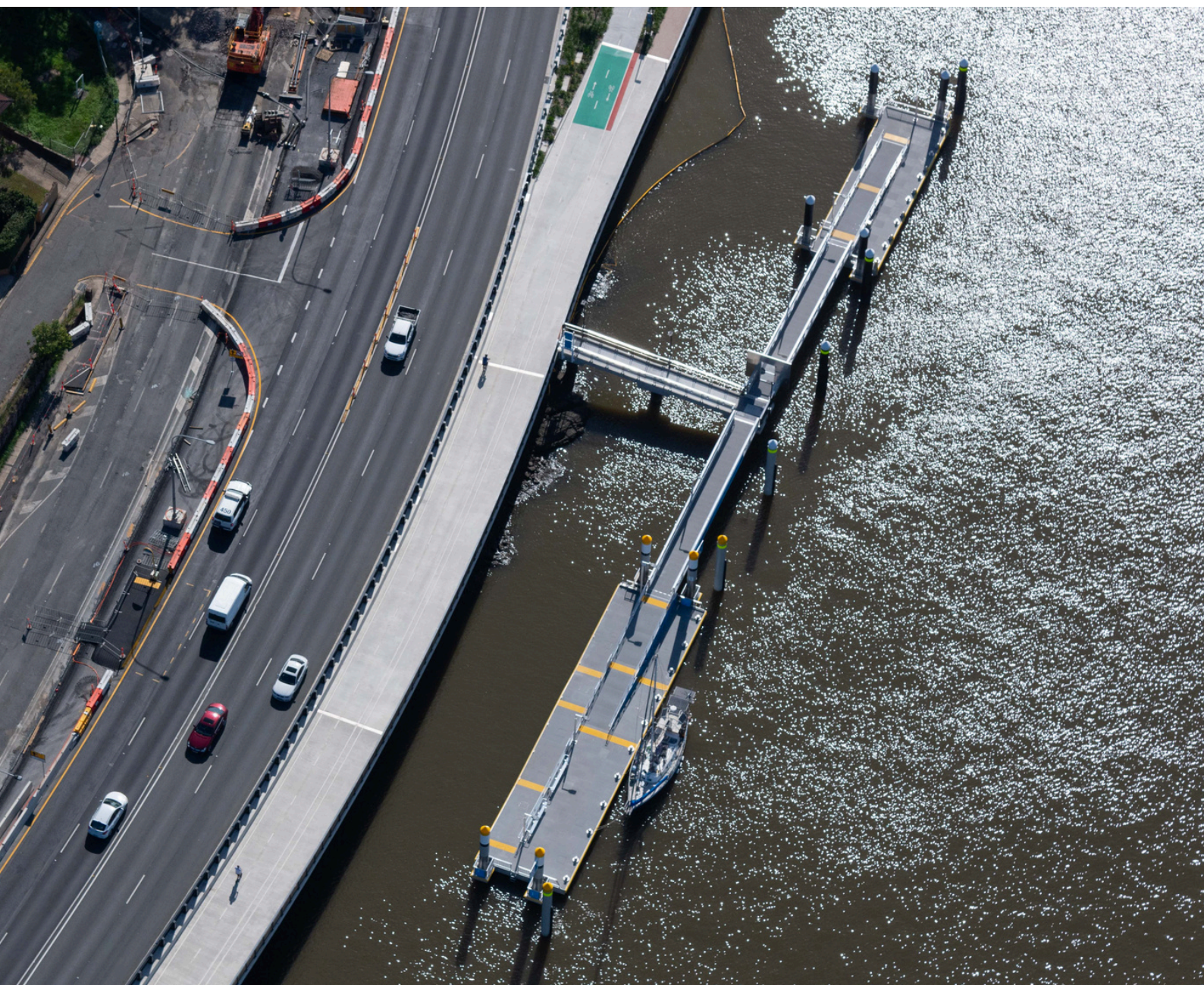


MANAGEMENT SYSTEMS.

Marine Structures acknowledges and is committed to taking the necessary care and responsibility to prevent all forms of environmental damage. It is our objective to comply with Local and State Environmental Legislation, Act and Regulations and to educate and train employees to work within the guidelines of Environmental Policy.

AS/NZS ISO 9001

A commitment to quality in every aspect of the business is guaranteed when partnering with Marine Structures; quality manufacturing practices and procedures, and continual improvement is at the forefront of everything we do. A testament to this is our customised Quality Management System (QMS) and ISO 9001 accreditation.



FSC ACCREDITATION.

Marine Structures has proudly been awarded accreditation from the Federal Safety Commissioner (FSC). This recognises our commitment to the highest standards of workplace Health & Safety in the building and construction industry.



Australian Government
Department of Employment and Workplace Relations
Office of the Federal Safety Commissioner

The Federal Safety Commissioner
certifies that

***The Marina Specialist
Pty Ltd***

having met the requirements of the
Australian Government building and
construction WHS Accreditation Scheme,
is hereby awarded accreditation from
28 May 2025 until 27 May 2028.

A handwritten signature in black ink, appearing to read 'David Denney'.

David Denney
Federal Safety Commissioner



Accreditation number: 785

